

## Appendix

### EXAMPLE MULTIMEDIA DOCUMENTS

This appendix contains storyboards, partial order diagrams, and sample PMSL and PMFF source for the multimedia documents used in examples and experiments in this dissertation. The first two documents he designed were `paris.pmsl` and `military.pmsl`. As the project progressed, both Caro and the dissertation author made many revisions to these documents. A description of them is included here to give the reader of the dissertation a more concrete notion of how PMSL documents are constructed.

#### A.1 The `paris.pmsl` document: a travelogue of Paris

The `paris.pmsl` document is divided into three parts. The first part is illustrated in Figure A.1, and consists of a sequence of images of a globe, that slowly zoom in to the continent of Europe, then the country of France, and finally the city of Paris. Meanwhile, synchronized with this sequence, the listener hears the French National Anthem. In later versions of the document (not illustrated here) there are additional images of the city of Paris presented in parallel with the sequence of globe and map images.

The second part of the document are illustrated in the top row of Figure A.2. In the second part, the narrator provides an overview of three sites that will be described in the travelogue: Notre Dame Cathedral, the Louvre Pyramid, and the Eiffel Tower. This narration is synchronized with subtitles for the hearing

impaired. While this narration is proceeding, images of these three sites are being presented in parallel; this provides an example of partial order, since the exact order in which the images appear is not important, as long as each image is on the screen before it is mentioned in the audio. As each site is mentioned, an arrow pointing to the location of that site on the map is synchronized with the audio. At the end of this part, a continue button is presented; the user must click on this button before the presentation proceeds. During this pause, portions of the next part of the document can be pre-fetched, up to the amount that is allocated in the transport layer receive buffer.

The third part of the document is illustrated in the bottom two rows of Figure A.2. The third part presents a sequence of images of the three featured sites, with an audio narration track synchronized with subtitles. (In later versions of the document, there are several side images presented in parallel with the main image; this increases the parallelism in the document and provides more opportunity for partial order transport to provide benefit.) After each of these segments, a continue button is presented. The document then concludes with an additional image of the Eiffel Tower, accompanied by an invitation to come a “see Paris for yourself.”

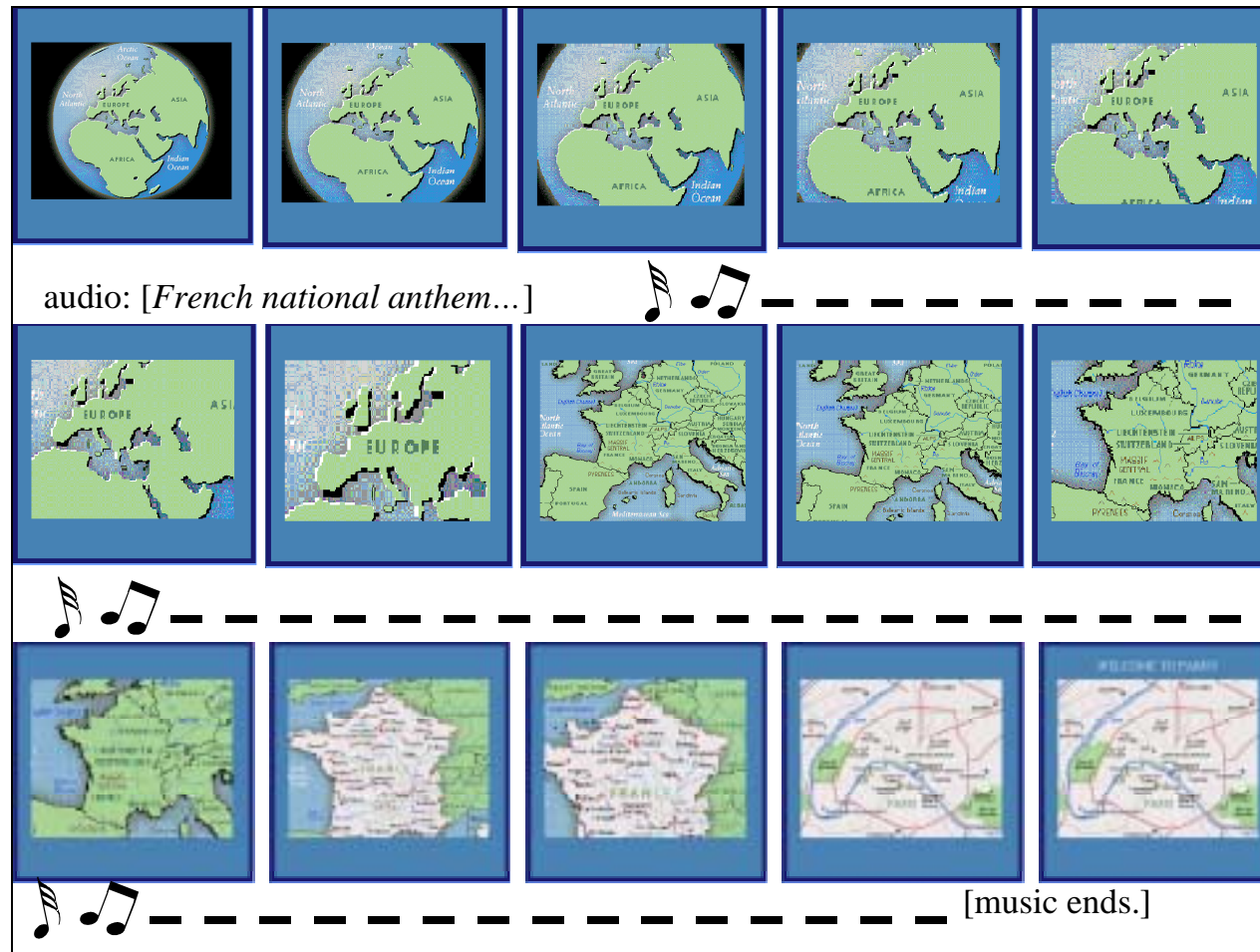


Figure A.1 paris.pmsl: storyboard (part 1)



Figure A.2 paris.pmsl: storyboard (part 2)

## **A.2    military.pmsl: a briefing on Gulf War weapons systems**

The `military.pmsl` document is similar in structure to the `paris.pmsl` document; we therefore present only a portion of the storyboard for this document. As illustrated in Figure A.3, this document begins with a description of two major groups of weapons systems used in the Gulf War: ground systems, and aircraft systems. The ground systems are in the top box, while aircraft systems are in the bottom box.

An example of partial order in this document occurs in the initial painting of the screen: the initial frame contains several images, each of which can be presented in parallel. Coarse-grained synchronization is also illustrated: as each system is mentioned, the box surrounding that particular system is highlighted.

THE GULF WAR

GROUND SYSTEMS

- M-1A1 Abrams
- MIM-104 Patriot

AIRCRAFT SYSTEMS

- AH-64 APACHE
- Drones (FPV)
- F-117A Stealth
- B-52 Stratofortress

Audio: "... divided into two major groups..."

ground systems...

and aircraft systems.

In the ground systems group, we have:

The M-1A1 Abrams and the MIM-104 Patriot

In the aircraft systems, we have:

the AH-64 Apache, the drones, the F117A stealth and the B52-Stratofortress

To learn more, ... click the top box or... the bottom box

Figure A.3 military.pmsl: partial storyboard.

### A.3 Listing of example PMSL source: paris.pmsl

```
# PARIS DEMO PMSL FILE

COLORDEF      "Red"          red
COLORDEF      "SteelBlue"    steelblue
COLORDEF      "MidnightBlue" midnightblue
COLORDEF      "White"        white

FONTDEF       "-adobe-times-medium-r-normal--24-240-75-75-p-124-iso8859-1"
              times24

FONTDEF       "-adobe-times-medium-r-normal-*-14-*-*-*-*-*-*" times14

PENDEF BkgndPen
          FOREGROUND steelblue
          LINEWIDTH 500

PENDEF BrdPen
          FOREGROUND midnightblue
          LINEWIDTH 30

PENDEF TitlePen
          FOREGROUND white
          FONT times24

PENDEF ArrowPen
          FOREGROUND red

          LINEWIDTH 8

PENDEF CaptionPen
          FOREGROUND white
          FONT times14

PENDEF ContBtnPen
          FOREGROUND midnightblue
          LINEWIDTH 3

TXTFORMATDEF TitleForm
          TOP 40
          LEFT 0
          RIGHT 500
          JUST C
          SPACE 1

TXTFORMATDEF ContTxtForm
          TOP 462
          LEFT 360
          RIGHT 460
          JUST C
          SPACE 1

#Background
ELEMENT      background:
              border.
              PEN BkgndPen
              BOX 0 0 500 500

RELIABLE
```

```

#Border color
ELEMENT      border:
              anthem,
              globel.                      RELIABLE
PEN BrdPen
BOX 0 0 500 500

ELEMENT      anthem:
              welcomeTitle,
              welcomeAu.                  UNRELIABLE
AUDIO "v0.32/paris/anthem.au"

ELEMENT      globel:
              pauseGlobel.                RELIABLE
IMAGE GIF 38 80 "v0.32/paris/globe.gif"

ELEMENT      pauseGlobel:
              globe2.                      RELIABLE
PAUSE 50

ELEMENT globe2:
              eraseGlobel,
              pauseGlobe2.                RELIABLE
IMAGE GIF 38 80 "v0.32/paris/globe2.gif"

ELEMENT eraseGlobel:
              globe3.                      RELIABLE
ERASE globel

ELEMENT pauseGlobe2:
              globe3.                      RELIABLE
PAUSE 50

ELEMENT      globe3: eraseGlobe2, pauseGlobe3.    RELIABLE
IMAGE GIF 38 80 "v0.32/paris/globe3.gif"

ELEMENT      eraseGlobe2: globe4.                RELIABLE
ERASE globe2

ELEMENT      pauseGlobe3: globe4.                RELIABLE
PAUSE 50

ELEMENT      globe4: eraseGlobe3, pauseGlobe4.    RELIABLE
IMAGE GIF 38 80 "v0.32/paris/globe4.gif"

ELEMENT      eraseGlobe3: globe5.                RELIABLE
ERASE globe3

ELEMENT      pauseGlobe4: globe5.                RELIABLE
PAUSE 50

ELEMENT      globe5: eraseGlobe4, pauseGlobe5.    RELIABLE
IMAGE GIF 38 80 "v0.32/paris/globe5.gif"

ELEMENT      eraseGlobe4: globe6.                RELIABLE
ERASE globe4

ELEMENT      pauseGlobe5: globe6.                RELIABLE
PAUSE 50

ELEMENT      globe6: eraseGlobe5, pauseGlobe6.    RELIABLE
IMAGE GIF 38 80 "v0.32/paris/globe6.gif"

```



ELEMENT	eraseGlobe5: globe7.	RELIABLE
ERASE	globe5	
ELEMENT	pauseGlobe6: globe7.	RELIABLE
PAUSE	50	
ELEMENT	globe7: eraseGlobe6, pauseGlobe7.	RELIABLE
IMAGE	GIF 38 80 "v0.32/paris/globe7.gif"	
ELEMENT	eraseGlobe6: europe2.	RELIABLE
ERASE	globe6	
ELEMENT	pauseGlobe7: europe2.	RELIABLE
PAUSE	50	
# There is no europe1		
ELEMENT	europe2: eraseGlobe7, pauseEurope2.	RELIABLE
IMAGE	GIF 38 80 "v0.32/paris/europe2.gif"	
ELEMENT	eraseGlobe7: europe3.	RELIABLE
ERASE	globe7	
ELEMENT	pauseEurope2: europe3.	RELIABLE
PAUSE	50	
ELEMENT	europe3: eraseEurope2, pauseEurope3.	RELIABLE
IMAGE	GIF 38 80 "v0.32/paris/europe3.gif"	
ELEMENT	eraseEurope2: europe4.	RELIABLE
ERASE	europe2	
ELEMENT	pauseEurope3: europe4.	RELIABLE
PAUSE	50	
ELEMENT	europe4: eraseEurope3, pauseEurope4.	RELIABLE
IMAGE	GIF 38 80 "v0.32/paris/europe4.gif"	
ELEMENT	eraseEurope3: europe5.	RELIABLE
ERASE	europe3	
ELEMENT	pauseEurope4: europe5.	RELIABLE
PAUSE	50	
ELEMENT	europe5: eraseEurope4, pauseEurope5.	RELIABLE
IMAGE	GIF 38 80 "v0.32/paris/europe5.gif"	
ELEMENT	eraseEurope4: france2.	RELIABLE
ERASE	europe4	
ELEMENT	pauseEurope5: france2.	RELIABLE
PAUSE	50	
# there is no france1		
ELEMENT	france2: eraseEurope5, pauseFrance2.	RELIABLE
IMAGE	GIF 38 80 "v0.32/paris/france2.gif"	
ELEMENT	eraseEurope5: france3.	RELIABLE
ERASE	europe5	
ELEMENT	pauseFrance2: france3.	RELIABLE
PAUSE	50	

ELEMENT           france3: eraseFrance2, pauseFrance3.           RELIABLE  
 IMAGE GIF 38 80 "v0.32/paris/france3.gif"

ELEMENT           eraseFrance2: paris.           RELIABLE  
 ERASE france2

ELEMENT           pauseFrance3: paris.           RELIABLE  
 PAUSE 50

ELEMENT           paris: welcomeTitle, welcomeAu.           RELIABLE  
 IMAGE GIF 38 80 "v0.32/paris/paris.gif"

ELEMENT           welcomeTitle: eraseFrance3.           RELIABLE  
 PEN TitlePen  
 TEXT TXTFORMAT TitleForm  
 "WELCOME TO PARIS!!"

ELEMENT           welcomeAu: eraseFrance3.           UNRELIABLE  
 AUDIO "v0.32/paris/welcome.au"

ELEMENT           eraseFrance3: introTxt.           RELIABLE  
 ERASE france3

ELEMENT           introTxt: smallSite1, smallSite2, smallSite3, introAu.  
 RELIABLE  
 PEN CaptionPen  
 TEXT TOP 420 LEFT 38 RIGHT 462 JUST L SPACE 1  
 "As you can see on the map, there are many sites in Paris to visit ... some  
 of "  
 "which are more popular than others. On this brief tour you will see  
 three "  
 "of the most popular sites."

ELEMENT           smallSite1: arrow1.           RELIABLE  
 IMAGE GIF 20 80 "v0.32/paris/site5\_small.gif"

ELEMENT           smallSite2: site2Au.           RELIABLE  
 IMAGE GIF 317 80 "v0.32/paris/site4\_small.gif"

ELEMENT           smallSite3: site3Au.           RELIABLE  
 IMAGE GIF 47 294 "v0.32/paris/tower\_a\_small.gif"

ELEMENT           introAu: arrow1.           UNRELIABLE  
 AUDIO "v0.32/paris/tour\_sites.au"

ELEMENT           arrow1: site1Au.           RELIABLE  
 PEN ArrowPen  
 LINE 250 250 170 180

ELEMENT           site1Au: arrow2.           UNRELIABLE  
 AUDIO "v0.32/paris/tour\_site#1.au"

ELEMENT           arrow2: site2Au.           RELIABLE  
 PEN ArrowPen  
 LINE 275 272 333 184

ELEMENT           site2Au: arrow3.           UNRELIABLE  
 AUDIO "v0.32/paris/tour\_site#2.au"

ELEMENT           arrow3: site3Au.           RELIABLE  
 PEN ArrowPen

```

LINE 181 278 105 303

ELEMENT site3Au:
    introContTxt,
    introContBtn. UNRELIABLE
AUDIO "v0.32/paris/tour_site#3.au"

ELEMENT      introContTxt:
    eraseIntroContTxt,
    eraseIntroTxt,
    eraseWelcomeTitle,
    eraseParis,
    eraseSmallSite1,
    eraseSmallSite2,
    eraseSmallSite3,
    eraseArrow1,
    eraseArrow2,
    eraseArrow3. RELIABLE
PEN CaptionPen
TEXT TXTFORMAT ContTxtForm
"CONTINUE"

ELEMENT      introContBtn:
    eraseIntroContTxt,
    eraseIntroTxt,
    eraseWelcomeTitle,
    eraseParis,
    eraseSmallSite1,
    eraseSmallSite2,
    eraseSmallSite3,
    eraseArrow1,
    eraseArrow2,
    eraseArrow3. RELIABLE
PEN ContBtnPen
HOTSPOT 360 455 460 480 CONTINUE

ELEMENT eraseIntroContTxt:
    luvTitle, luvFrameAu, luv, flag. RELIABLE
ERASE introContTxt

ELEMENT eraseIntroTxt:
    luvTitle, luvFrameAu, luv, flag. RELIABLE
ERASE introTxt

ELEMENT      eraseWelcomeTitle:luvTitle, luvFrameAu, luv, flag. RELIABLE
ERASE welcomeTitle

ELEMENT      eraseParis:luvTitle, luvFrameAu, luv, flag. RELIABLE
ERASE paris

ELEMENT      eraseSmallSite1:luvTitle, luvFrameAu, luv, flag.
RELIABLE
ERASE smallSite1

ELEMENT      eraseSmallSite2:luvTitle, luvFrameAu, luv, flag.
RELIABLE
ERASE smallSite2

ELEMENT      eraseSmallSite3:luvTitle, luvFrameAu, luv, flag.
RELIABLE
ERASE smallSite3

```

```

ELEMENT          eraseArrow1:luvTitle, luvFrameAu, luv, flag.  RELIABLE
    ERASE arrow1

ELEMENT          eraseArrow2:luvTitle, luvFrameAu, luv, flag.  RELIABLE
    ERASE arrow2

ELEMENT          eraseArrow3:luvTitle, luvFrameAu, luv, flag.  RELIABLE
    ERASE arrow3

ELEMENT          luvTitle:
    luvTxt1.          RELIABLE
    PEN TitlePen
    TEXT TXTFORMAT TitleForm
    "I. M. Pei's Louvre Pyramid"

ELEMENT luv:
    luvTxt1.          RELIABLE
    IMAGE GIF 24 80 "v0.32/paris/site5.gif"

ELEMENT flag:
    luvContTxt,
    luvContBtn.      UNRELIABLE
    IMAGE GIF 390 25 "v0.32/paris/frenchflag.gif"

ELEMENT luvFrameAu:
    luvTxt1.          UNRELIABLE
    AUDIO "v0.32/paris/frame.au"

ELEMENT luvTxt1:
    luvAul.          RELIABLE
    PEN CaptionPen
    TEXT TOP 415 LEFT 25 RIGHT 475 JUST L SPACE 1
    "Chinese-born American architect I. M. Pei designed this controversial
glass "
    "pyramid (completed in 1989) at the entrance to the Louvre, a museum
in Paris, "
    "France. Noted for his unique arrangements of geometric shapes, "
    "Pei also earned "
    "a reputation for his creative use of space, surfaces, and materials.
"

ELEMENT luvAul:
    pauseLuv1.      UNRELIABLE
    AUDIO "v0.32/paris/louvrel.au"

ELEMENT pauseLuv1:
    eraseLuvTxt1.    RELIABLE
    PAUSE 2000

ELEMENT eraseLuvTxt1:
    luvTxt2.          RELIABLE
    ERASE luvTxt1

ELEMENT luvTxt2:
    luvAu2.          RELIABLE
    PEN CaptionPen
    TEXT TOP 415 LEFT 25 RIGHT 475 JUST L SPACE 1
    "One of the foremost architects of the 20th century, "
    "Pei has designed important "
    "public and corporate buildings throughout the world and has worked
with urban "
    "renewal. "

```

```

ELEMENT luvAu2:
    luvContTxt,
    luvContBtn.                UNRELIABLE
    AUDIO "v0.32/paris/louvre2.au"

ELEMENT luvContTxt:
    eraseLuvTxt2,
    eraseLuvTitle,
    eraseLuv,
    eraseLuvContTxt,
    eraseFlag.                RELIABLE
    PEN CaptionPen
    TEXT TXTFORMAT ContTxtForm
    "CONTINUE"

ELEMENT luvContBtn:
    eraseLuvTxt2,
    eraseLuvTitle,
    eraseLuv,
    eraseLuvContTxt,
    eraseFlag.                RELIABLE
    PEN ContBtnPen
    HOTSPOT 360 455 460 480 CONTINUE

ELEMENT eraseLuvTxt2:
    notreTitle, notreTxt1, notreFrameAu,
    notre.                    RELIABLE
    ERASE luvTxt2

ELEMENT eraseLuvTitle:
    notreTitle, notreTxt1, notreFrameAu,
    notre.                    RELIABLE
    ERASE luvTitle

ELEMENT eraseLuv:
    notreTitle, notreTxt1, notreFrameAu,
    notre.                    RELIABLE
    ERASE luv

ELEMENT eraseLuvContTxt:
    notreTitle, notreTxt1, notreFrameAu,
    notre.                    RELIABLE
    ERASE luvContTxt

ELEMENT eraseFlag:
    notreTitle, notreTxt1, notreFrameAu,
    notre.                    RELIABLE
    ERASE flag

ELEMENT notreTitle:
    notreAul.                RELIABLE
    PEN TitlePen
    TEXT TXTFORMAT TitleForm
    "Notre Dame Cathedral"

ELEMENT notre:
    notreAul.                RELIABLE
    IMAGE GIF 25 80 "v0.32/paris/site4.gif"

ELEMENT notreFrameAu:
    notreAul.                UNRELIABLE

```

AUDIO "v0.32/paris/frame.au"

ELEMENT notreTxt1:  
notreAul. RELIABLE  
PEN CaptionPen  
TEXT TOP 425 LEFT 25 RIGHT 475 JUST L SPACE 1  
"Notre Dame Cathedral was begun in 1163 and completed for the most  
part in "  
"1250. It is one of the best-known Gothic cathedrals in the world.  
The view "  
"here is of the south side, overlooking the Seine River, displaying  
the "  
"dramatic "  
"flying buttresses and one of the famous rose windows."

ELEMENT notreAul:  
pauseNotre. UNRELIABLE  
AUDIO "v0.32/paris/cathedral\_a.au"

ELEMENT pauseNotre:  
eraseNotreTxt1. RELIABLE  
PAUSE 2000

ELEMENT eraseNotreTxt1:  
notreTxt2. RELIABLE  
ERASE notreTxt1

ELEMENT notreTxt2:  
notreAu2. RELIABLE  
PEN CaptionPen  
TEXT TOP 425 LEFT 25 RIGHT 475 JUST L SPACE 1  
"Although Notre Dame is considered a Gothic structure, it incorporates  
"  
"remnants "  
"of the earlier Romanesque style. "

ELEMENT notreAu2:  
notreContTxt,  
notreContBtn. UNRELIABLE  
AUDIO "v0.32/paris/cathedral\_b.au"

ELEMENT notreContTxt:  
eraseNotreTxt2,  
eraseNotreTitle,  
eraseNotre,  
eraseNotreContTxt. RELIABLE  
PEN CaptionPen  
TEXT TXTFORMAT ContTxtForm  
"CONTINUE"

ELEMENT notreContBtn:  
eraseNotreTxt2,  
eraseNotreTitle,  
eraseNotre,  
eraseNotreContTxt. RELIABLE  
PEN ContBtnPen  
HOTSPOT 360 455 460 480 CONTINUE

ELEMENT eraseNotreTxt2:  
eiffelTitle, eiffelFrameAu, eiffelTxt1,  
eiffel. RELIABLE  
ERASE notreTxt2

```

ELEMENT      eraseNotreTitle:
              eiffelTitle, eiffelFrameAu, eiffelTxt1,
              eiffel.                RELIABLE
ERASE notreTitle

ELEMENT      eraseNotre:
              eiffelTitle, eiffelFrameAu, eiffelTxt1,
              eiffel.                RELIABLE
ERASE notre

ELEMENT      eraseNotreContTxt:
              eiffelTitle, eiffelFrameAu, eiffelTxt1,
              eiffel.                RELIABLE
ERASE notreContTxt

ELEMENT      eiffelTitle:
              eiffelAu1.            RELIABLE
PEN TitlePen
TEXT TXTFORMAT TitleForm
"Eiffel Tower"

ELEMENT      eiffel:
              eiffelAu1.            RELIABLE
IMAGE GIF 150 80 "v0.32/paris/tower_a.gif"

ELEMENT      eiffelFrameAu:
              eiffelAu1.            UNRELIABLE
AUDIO "v0.32/paris/frame.au"

ELEMENT      eiffelTxt1:
              eiffelAu1.            RELIABLE
PEN CaptionPen
TEXT TOP 405 LEFT 25 RIGHT 475 JUST L SPACE 1
"The Eiffel Tower, rising in the twilight sky above Paris, "
"was built for the World's "
"Fair in 1889.  French engineer Alexandre Gustave Eiffel "
"designed it as a cross-braced latticed girder with minimum wind
resistance."

ELEMENT      eiffelAu1:
              pauseEiffel.          UNRELIABLE
AUDIO "v0.32/paris/eiffel_a.au"

ELEMENT      pauseEiffel:
              eraseEiffelTxt1.        RELIABLE
PAUSE 2000

ELEMENT      eraseEiffelTxt1:
              eiffelTxt2.            RELIABLE
ERASE eiffelTxt1

ELEMENT      eiffelTxt2:
              eiffelAu2.            RELIABLE
PEN CaptionPen
TEXT TOP 405 LEFT 25 RIGHT 475 JUST L SPACE 1
"Constructed from over 6300 metric tons (7000 tons) of highest quality
wrought "
"iron, the Eiffel Tower is a masterpiece of wrought-iron technology."

ELEMENT      eiffelAu2:
              eiffelContTxt,

```

```

        eiffelContBtn.                UNRELIABLE
AUDIO "v0.32/paris/eiffel_b.au"

ELEMENT      eiffelContTxt:
              eraseEiffelTxt2,
              eraseEiffelTitle,
              eraseEiffel,
              eraseEiffelContTxt.      RELIABLE
PEN CaptionPen
TEXT TXTFORMAT ContTxtForm
"CONTINUE"

ELEMENT      eiffelContBtn:
              eraseEiffelTxt2,
              eraseEiffelTitle,
              eraseEiffel,
              eraseEiffelContTxt.      RELIABLE
PEN ContBtnPen
HOTSPOT 360 455 460 480 CONTINUE

ELEMENT      eraseEiffelTxt2:
              endImg, endAu.          RELIABLE
ERASE eiffelTxt2

ELEMENT      eraseEiffelTitle:
              endImg, endAu.          RELIABLE
ERASE eiffelTitle

ELEMENT      eraseEiffel:
              endImg, endAu.          RELIABLE
ERASE eiffel

ELEMENT      eraseEiffelContTxt:
              endImg, endAu.          RELIABLE
ERASE eiffelContTxt

ELEMENT      endImg:
              pauseEnd1.              RELIABLE
IMAGE GIF 20 80 "v0.32/paris/tower_c.gif"

ELEMENT      endAu                UNRELIABLE
AUDIO "v0.32/paris/end.au"

ELEMENT      pauseEnd1:
              endBox1.                RELIABLE
PAUSE 7000

ELEMENT      endBox1:
              pauseEnd2.              RELIABLE
PEN BrdPen
BOX 25 25 475 475

ELEMENT      pauseEnd2:
              endBox2.                RELIABLE
PAUSE 50

ELEMENT      endBox2:
              pauseEnd3.              RELIABLE
PEN BrdPen
BOX 50 50 450 450

ELEMENT      pauseEnd3:

```



```

                endBox3.      RELIABLE
        PAUSE 50

ELEMENT endBox3:
                pauseEnd4.    RELIABLE
        PEN BrdPen
        BOX 60 60 440 440

ELEMENT pauseEnd4:
                endBox4.      RELIABLE
        PAUSE 50

ELEMENT endBox4:
                pauseEnd5.    RELIABLE
        PEN BrdPen
        BOX 70 70 430 430

ELEMENT                pauseEnd5:
                endBox5.      RELIABLE
        PAUSE 50

ELEMENT endBox5:
                pauseEnd6.    RELIABLE
        PEN BrdPen
        BOX 80 80 420 420

ELEMENT pauseEnd6:
                endBox6.      RELIABLE
        PAUSE 50

ELEMENT                endBox6:
                pauseEnd7.    RELIABLE
        PEN BrdPen
        BOX 90 90 410 410

ELEMENT pauseEnd7:
                endBox7.      RELIABLE
        PAUSE 50

ELEMENT endBox7:
                pauseEnd8.    RELIABLE
        PEN BrdPen
        BOX 100 100 400 400

ELEMENT pauseEnd8:
                endBox8.      RELIABLE
        PAUSE 50

ELEMENT endBox8:
                pauseEnd9.    RELIABLE
        PEN BrdPen
        BOX 110 110 390 390

ELEMENT pauseEnd9:
                endBox9.      RELIABLE
        PAUSE 50

ELEMENT endBox9:
                pauseEnd10.   RELIABLE
        PEN BrdPen
        BOX 120 120 380 380

```

```

ELEMENT pauseEnd10:
    endBox10.      RELIABLE
    PAUSE 50

ELEMENT endBox10:
    pauseEnd11.    RELIABLE
    PEN BrdPen
    BOX 130 130 370 370

ELEMENT pauseEnd11:
    endBox11.      RELIABLE
    PAUSE 50

ELEMENT endBox11:
    pauseEnd12.    RELIABLE
    PEN BrdPen
    BOX 140 140 360 360

ELEMENT pauseEnd12:
    endBox12.      RELIABLE
    PAUSE 50

ELEMENT endBox12:
    pauseEnd13.    RELIABLE
    PEN BrdPen
    BOX 150 150 350 350

ELEMENT pauseEnd13:
    endBox13.      RELIABLE
    PAUSE 50

ELEMENT endBox13:
    pauseEnd14.    RELIABLE
    PEN BrdPen
    BOX 160 160 340 340

ELEMENT pauseEnd14:
    endBox14.      RELIABLE
    PAUSE 50

ELEMENT endBox14:
    pauseEnd15.    RELIABLE
    PEN BrdPen
    BOX 170 170 330 330

ELEMENT pauseEnd15:
    endBox15.      RELIABLE
    PAUSE 50

ELEMENT endBox15:
    pauseEnd16.    RELIABLE
    PEN BrdPen
    BOX 180 180 320 320

ELEMENT pauseEnd16:
    endBox16.      RELIABLE
    PAUSE 50

ELEMENT endBox16:
    pauseEnd17.    RELIABLE
    PEN BrdPen
    BOX 190 190 310 310

```

```

ELEMENT pauseEnd17:
    endBox17.          RELIABLE
    PAUSE 50

ELEMENT endBox17:
    pauseEnd18.        RELIABLE
    PEN BrdPen
    BOX 200 200 300 300

ELEMENT pauseEnd18:
    endBox18.          RELIABLE
    PAUSE 50

ELEMENT endBox18:
    pauseEnd19.        RELIABLE
    PEN BrdPen
    BOX 210 210 290 290

ELEMENT pauseEnd19:
    endBox19.          RELIABLE
    PAUSE 50

ELEMENT endBox19:
    pauseEnd20.        RELIABLE
    PEN BrdPen
    BOX 220 220 280 280

ELEMENT pauseEnd20:
    endBox20.          RELIABLE
    PAUSE 50

ELEMENT endBox20:
    pauseEnd21.        RELIABLE
    PEN BrdPen
    BOX 230 230 270 270

ELEMENT pauseEnd21:
    endBox21.          RELIABLE
    PAUSE 50

ELEMENT endBox21:
    pauseEnd22.        RELIABLE
    PEN BrdPen
    BOX 240 240 260 260

ELEMENT pauseEnd22:
    endBox22.          RELIABLE
    PAUSE 50

ELEMENT endBox22:
    PEN BrdPen
    BOX 249 249 251 251

```

## A.4 Excerpts from sample file paris.pmff

Because the paris.pmff file corresponding to the paris.pmsl file is lengthy, we only show sample excerpts from this file.

```
# This file was automatically generated using version
# pconrad/v0.32.07a of ptpc.
# Manual editing not recommended.
#
# Created: Fri Jun 11 05:28:27 1999
# Source: "paris.pmsl"
#
#
#
# Optimized for bitrate 128 Kbps with 80 Kbps for audio
# assuming UTL mech T2 with header length 52 datalink header 8
#
#
#
# Service Profile:
627 168
0 1 63
0 1 51
0 1 56
0 1 48
0 1 7
0 1 6
0 1 7
0 2 8 9
1 2 48 49

[... many additional lines of service profile deleted]
0 1 161
0 1 162
0 1 163
0 1 164
0 1 165
0 1 166
0 1 167
0 0
#
# Elements:
0 0 0 48 pen 0 / 5 ContBtnPen fg "MidnightBlue" lw 3 ft 0
1 0 0 90 pen 1 / 5 CaptionPen fg "White" lw -1 ft "-adobe-times-medium-r-
normal-*-*14-*-*-*-*-*"
2 0 0 37 pen 2 / 5 ArrowPen fg "Red" lw 8 ft 0
3 0 0 99 pen 3 / 5 TitlePen fg "White" lw -1 ft "-adobe-times-medium-r-
normal--24-240-75-75-p-124-iso8859-1"
4 0 0 45 pen 4 / 5 BrdPen fg "MidnightBlue" lw 30 ft 0
5 0 0 45 pen 5 / 5 BkgndPen fg "SteelBlue" lw 500 ft 0
6 0 0 46 blok 0 / 161 background draw box 5 0 0 500 500
7 0 0 42 blok 1 / 161 border draw box 4 0 0 500 500
9 1 13 40 cell 3 / 161 globe1 draw image gif 38 80 0 "v0.32/paris/globe.gif"
8 1 320 25 cell 2 / 161 anthem audio 32 "v0.32/paris/anthem.au"
8 1 320 25 cell 2 / 161 anthem audio 352
8 1 320 25 cell 2 / 161 anthem audio 672
9 1 192 40 cell 3 / 161 globe1 draw image gif 38 80 13
```

```

8 1 320 25 cell 2 / 161 anthem audio 992
8 1 320 25 cell 2 / 161 anthem audio 1312
8 1 320 25 cell 2 / 161 anthem audio 1632
8 1 320 25 cell 2 / 161 anthem audio 1952
9 1 10 40 cell 3 / 161 globe1 draw image gif 38 80 205
8 1 320 25 cell 2 / 161 anthem audio 2272
8 1 320 25 cell 2 / 161 anthem audio 2592
9 1 511 40 cell 3 / 161 globe1 draw image gif 38 80 215
8 1 320 25 cell 2 / 161 anthem audio 2912
8 1 320 25 cell 2 / 161 anthem audio 3232
8 1 320 25 cell 2 / 161 anthem audio 3552
8 1 320 25 cell 2 / 161 anthem audio 3872
8 1 320 25 cell 2 / 161 anthem audio 4192
8 1 320 25 cell 2 / 161 anthem audio 4512
8 1 320 25 cell 2 / 161 anthem audio 4832
8 1 320 25 cell 2 / 161 anthem audio 5152
8 1 320 25 cell 2 / 161 anthem audio 5472
9 1 510 40 cell 3 / 161 globe1 draw image gif 38 80 726
8 1 320 25 cell 2 / 161 anthem audio 5792

```

...[many additional lines of pmff output deleted]

```

158 0 0 48 blok 152 / 161 endBox18 draw box 4 210 210 80 80
159 0 0 34 blok 153 / 161 pauseEnd19 pause 50
160 0 0 48 blok 154 / 161 endBox19 draw box 4 220 220 60 60
161 0 0 34 blok 155 / 161 pauseEnd20 pause 50
162 0 0 48 blok 156 / 161 endBox20 draw box 4 230 230 40 40
163 0 0 34 blok 157 / 161 pauseEnd21 pause 50
164 0 0 48 blok 158 / 161 endBox21 draw box 4 240 240 20 20
165 0 0 34 blok 159 / 161 pauseEnd22 pause 50
166 0 0 46 blok 160 / 161 endBox22 draw box 4 249 249 2 2
167 0 0 25 blok 161 / 161 $FIN$ null

```

## A.5 Description of PMTP output

For each line in the PMFF file (except for the service profile and comments), exactly one PMTP message is sent from server to client. The first number on the line of PMTP output is the element number, followed by a flag indicating whether this is the last cell in the stream for a particular element. The third number indicates the length of the data in the trailer, which is either read from the file named on the first line associated with an element (for audio and image data), or is read from the data inline in the PMFF file (for text data). The fourth number is the length of the PMTP header that makes up the remainder of the line in the PMFF file. The server forms a PMTP packet by stripping off these first four numbers, and placing the header and trailer into a message, and sending it to the client.